

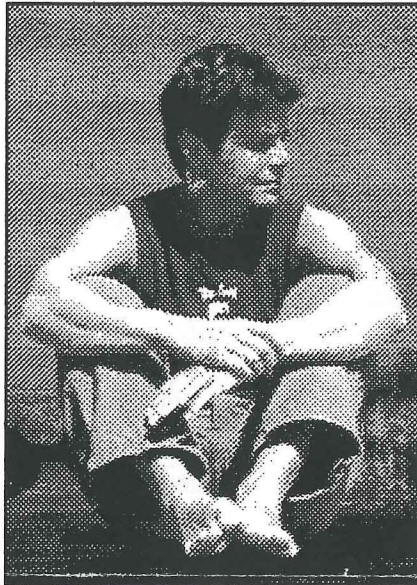
# HERLAND VOICE

November 2003

Volume 21, Number 11

## Herland's 20th Anniversary Celebration! Saturday, November 15th, 2003

Join Herland as we celebrate 20 years of being a vital resource for the womyn of Oklahoma and beyond!



In the early 70s, at a time when the music industry was particularly inaccessible to women, Tret Fure was rewriting the rules. At the age of 19, she toured and eventually recorded with Spencer Davis. A short time later, Tret Fure was working with the most successful commercial bands of the decade: *Yes*, *Poco*, and *The J Geils Band*.

After becoming one of the first women sound engineers in the country, she left the mainstream music scene and soon discovered the blossoming genre known as Women's Music. Fure produced and engineered five of Cris Williamson's solo projects as well as the three releases they recorded as a duo: *Postcards from Paradise*, *Between the Covers* and *Radio Quiet*.

Fure's acclaimed solo releases include *Terminal Hold*, *Edges of the Heart*, *Time Turns the Moon*, and *Back Home*, which took both "Album of the Year" and "Single of the Year" awards for 2001 from *Out-voice Top 40*. Whether it is her disarming piano ballads or gorgeous love songs, Fure's words transform inaccessible and complex emotions into that which listeners can viscerally touch.

### Open House at Herland

1-5 pm

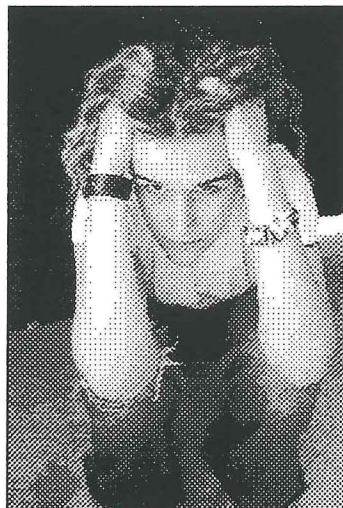
Come by Herland for an afternoon of pictures, mementos, retreat videos, refreshments and much more. Get a free (that day only) copy of the commemorative Herland 20th Anniversary Book and register for the evening concert's door prize. View art donated by Kathy Buttry, Sue Clancy, Michele Dillehay, Diana Faulkner, Gail Garloch, Bernadette Martinez, Anthea Maton, Deidre Murray, Connie Seabourn, Dana Tiger, and Tommy Thomas for the silent auction later that evening. Former board members are invited to pick up a name tag that will identify them and the years they served.

### Tret Fure in Concert

7:00 pm

City Arts Center on the State Fairgrounds  
3000 Pershing Blvd.

Join us for an evening of celebration with veteran women's music performer Tret Fure and spoken word artist Lynnsey Weber. The night will also feature a silent auction of women's art and a short program to honor past board members and volunteers.



Opening for Tret will be spoken word artist, Lynnsey Weber. Lynnsey has been slinging words since she was a wee tot, all over her native state of Oklahoma and beyond. She has been a featured artist in *Living Arts of Tulsa*, a guest performer at two LadyFest festivals, a slam poet finalist, and a regular word-spitter at many other events!

Lynnsey also self produced and released one full length CD, *More Than This*, and a second CD is in the works. Her poetry is a melting pot of insight on politics, relationships, and life in general. Her work is fiery, provocative, powerful, and deeply personal. It promises to awaken your heart and incite a riot in your mind. No one leaves her shows untouched.



## Herland Book Club

The Herland Book club will not meet in November. The group's next meeting will be at 7 pm on Monday, December 1st. The book to be discussed will be *The Passion of Artemisia*, by Susan Vreeland. There are nine copies of this book in the Metropolitan Library System and one at Herland. It is also available at mainstream bookstores in paperback.

*The Passion of Artemisia* is a novel based upon the life of Artemisia Gentileschi, a contemporary of Galileo. It is beautifully researched and is rich with casual detail of 17th Century Italy, and its clothing, interiors, exteriors, monuments, churches, street life, food, and customs. Artemisia was a remarkable woman and a wonderful artist. You can view her masterpieces in glorious color at various sites on the Internet. Her nudes are exquisite.

## Herland Hiking

The Herland Hiking Group will have its regular monthly outing to Martin Nature Park, 5000 W. Memorial, at 10 am on Saturday, Nov. 8th. There is also an optional coffee gathering beforehand at Panera's, corner of Memorial & Meridian, at 9:30 am.

## Womyn of Color

The Womyn of Color group meets the 2nd Sunday of each month. Please email [womynofcolor@gay.com](mailto:womynofcolor@gay.com) or call (405) 842-3464 or (405) 947-7691 for more information.

## Native American Women

OKC Two-Spirit Society is having meetings for lesbian and bisexual women of Native American descent. The next meeting is at Herland on November 28 at 6:30 pm. The OKC Two-Spirit Hotline number is (405) 317-7283.

## Herland Supper Club

Saturday, November 8th

OUT OK Film Fest

4:00 pm

at UCO in Edmond

followed by Supper

at Hideaway Pizza

116 E. 5th St. in Edmond

at 6:00 pm

This month the group will go to UCO in Edmond to see *Benzina* at the OUT OK Film Festival. Hailed as a feminist thriller, the film follows two girls in love and on the run from the law. The film will be shown in the Troy Smith Lecture Hall of the Business School and tickets are \$7. (Park near the Liberal Arts Bldg, north on Bauman off of 2nd Street. Bus. School is NW of that.) After the movie, the group will eat at Hideaway Pizza in Edmond. Meet at Herland at 3:15 pm if you would like to carpool to Edmond. For more info, call Ginger at 942-1535.

## HERLAND EVENTS CALENDAR

### November

- Wednesday, November 5: Film *By Hook or By Crook*, OU, 7 pm
  - November 6-8: Out OK Film Festival at Northpark Cinema in OKC and UCO in Edmond
  - November 7-9: IRIS at Chelsea's for Diversity Weekend, Eureka Springs, Arkansas
  - Saturday, November 8: Herland Hike at Martin Nature Park, 5000 W. Memorial, 10 am
  - Saturday, November 8: Herland concert committee meeting, 1 pm and Herland board meeting 2 pm, everyone welcome
  - Saturday, November 8: Herland Supper Club goes to OUT OK Film Festival at 4 pm at UCO followed by supper at Hideaway Pizza at 6 pm
  - Sunday, November 9: Womyn of Color Meeting, call for details
  - Monday, November 10: OGLPC Monthly Meeting at the Center, 2135 NW 39th, 7 pm
  - Thursday, November 13: Mary and Louise at the UCO Jazz Lab, 100 E 5th St, Edmond, 8 pm, \$7
  - Saturday, November 15: Herland 20th Anniversary Open House, 1-5 pm at Herland and Concert 7 pm at City Arts Center
  - Saturday, November 22: Peace Fest at Civic Center, 10 am - 4 pm
  - Saturday, November 22: Sisters of Swing Benefit, St. John's School, 5201 N Brookline, 8 pm, donations appreciated
  - Thursday, November 28: Women's Two-Spirit Meeting at Herland, 6:30 pm
- ### December
- Monday, December 1: Herland Book Club, 7 pm
  - Sunday, December 14: Sisters of Swing Christmas Shows, Epiphany Church, 7336 W. Britton, 2 pm & 7 pm, \$5
  - Sunday, December 21: Herland Potluck at 6 pm followed by Board Meeting, 7 pm, everyone welcome for one or both

## Count on My Support

Yes! I/we want to continue to support Herland's efforts for the women's community in Oklahoma.

- Enclosed is a contribution for \$ \_\_\_\_\_
- Please add me to the mailing list for The Voice.
- Please change my address (new address below).

Name \_\_\_\_\_

Street \_\_\_\_\_

City \_\_\_\_\_ State \_\_\_\_\_ Zip \_\_\_\_\_

## Groups Protest Love Won Out Conference

The Interfaith Diversity and Equality Alliance, OGLPC, and the Peace House organized a rally near Bethany First Church of the Nazarene last month to oppose the Focus on the Family's Love Won Out conference. Wayne Besen, author of *Anything But Straight*, spoke about the myth of the ex-gay movement at Church of the Open Arms following the rally.

In the one-day conference that tours the nation, FOF promotes the idea that homosexuality is treatable and preventable. Love Won Out, Exodus International, and People Can Change are several of the right-wing Christian ministries dedicated to converting gays and lesbians.

According to Besen, FOF does not tell the truth. Instead, conference participants "get heavy doses of scientifically bankrupt theories and misleading information that conceals the true failure rate of so-called reparative therapy."

Focus on the Family was also in Oklahoma 10 years ago holding seminars to help right-wing conservatives push for an anti-gay initiative (similar to Colorado's Amendment 2) in the state.

## Senate passes ban on certain abortion procedures

For the first time since the Supreme Court legalized abortion in 1973, the US Senate has imposed a ban on a procedure known medically as intact dilation and extraction and what critics call "partial-birth abortion." President Bush has said he will sign the bill which lacks a provision to permit the procedure even if necessary to protect the mother's health. A similar bill was passed in the 104th and 105th Congress but was vetoed by President Clinton.

Intact dilation and extraction refers to a late-term abortion technique in which labor is artificially induced until the lower body of the fetus emerges. The head is then collapsed, and the dead but intact fetus is delivered. Last year, roughly 2,200 partial-birth abortions, or less than 1 percent of the total number of abortions, were performed, according to The New York Times. Although rare, the procedures are performed for a variety of reasons including a dead or badly malformed fetus or one with severe hydrocephalus or continuing the pregnancy would place the mother's health or life at severe risk.

The American College of Obstetricians and Gynecology opposes the legislation and has issued a statement saying intact dilation and extraction "may be the best or most appropriate procedure in a particular circumstance to save the life or preserve the health of a woman, and only the doctor, in consultation with the patient, based upon the woman's particular circumstances, can make this decision."

NOW and other reproductive rights supporters are planning a March for Freedom of Choice in Washington next April.

## Ireland Dismissed as Chief of YWCA

Former NOW President, Patricia Ireland was fired after less than six months on the job as the CEO of the YWCA. Ireland's hiring had been opposed by right-wing conservative organizations. One such group, the Traditional Values Coalition, is being credited with forcing Ireland's ouster. The anti-gay, anti-choice group called Ireland a pro-abortion liberal extremist and "a lifelong advocate of everything that most Christians oppose" and had asked Secretary of Health and Human Services Tommy Thompson to cut federal funding to the YWCA.

## Study of African-American Lesbian Health

The Mautner Project is seeking Black lesbian and bisexual women age 18 and older to participate in the first comprehensive national survey of African-American lesbian health. Led by Mautner Project Health Promotional and Research Director, Cheryl Pearson-Fields, the groundbreaking "Spirit Study" is designed, implemented, and evaluated by African-American lesbians and draws on partnerships with national and community-based organizations serving Black women who partner with women.

The Spirit Study is completely confidential. Participants may complete the survey at their convenience online at [www.spiritstudy.org](http://www.spiritstudy.org) or can request copies by phone/TTY (202)332-5536, email ([mautner@mautnrproject.org](mailto:mautner@mautnrproject.org)), or postal mail: Spirit Study, 1707 L Street NW, Suite 230, Washington, DC 20036. The Mautner Project includes a postage-paid return envelope with every survey requested. For more information about participating in the Spirit Study, please call (202)332-5536 or email [cfields@mautnerproject.org](mailto:cfields@mautnerproject.org)

## PNI Announces 2004 Theme, Logo Contest

PNI has chosen "Stand Out . . . Stand Proud" as the theme for the 2004 Pride season. The logo contest is open to the entire community and the winner will be chosen anonymously at the Dec. 15th meeting. The contest winner receives \$100 cash, and will be recognized as the artist with a text listing on the back of the shirts and the opportunity to sign the front of the shirt.

Rules for entries are as follows. Do not sign the front of the design. Print your name and contact information, put it in an envelope and attach it to the back of each entry. Submissions should be on 8.5 x 11 paper or larger. Keep in mind the design must be reducible to 1 inch by 1 inch for pins. Or a second, smaller version of the design should be submitted with the entry. PNI reserves the right to make necessary adaptations for the pins. Keep in mind that color separation is necessary for t-shirt and pin production.

Multiple entries will be accepted. Each entry must include the theme and the year of 2004. The chosen logo becomes the property of Pride Network, Inc. PNI reserves the right to reject any and all logo submissions.

All logo submissions should be mailed or hand carried to The Center, 2135 NW 39<sup>th</sup> St., Oklahoma City, OK 73112. All entries must be received by 5 pm, Monday, December 15.

Pride Network meets at 7:30 pm, the third Monday of each month at The Center, 2135 NW 39<sup>th</sup> St. Meetings are open to the public. For more information, contact T J McKinsey, 602-1224 or email [pni@okcpride.com](mailto:pni@okcpride.com).

The Voice is published by: Herland Sister Resources, Inc. 2312 NW 39<sup>th</sup>, Oklahoma City, OK 73112. The Voice is offered as an open forum for community discourse. Articles reflect the opinions of the author and not necessarily those of Herland Sister Resources. Unsolicited articles and letters to the editor are welcomed and must be signed by the writer with full name and address. Upon request, letters or articles may be printed under a pseudonym or anonymously. Subscriptions to The Voice are free upon request although a donation is requested to meet publication and distribution costs.

## Iranian Activist Wins Nobel Prize

Shirin Ebadi, Iran's first female judge and a relatively unknown lawyer-activist, has been awarded the Nobel Peace Prize for 2003. As the founder of the Association for Support of Children's Rights in Iran, Ebadi has advocated for women, children, and refugees, as well as political dissidents. Ebadi has struggled to create change from within an Islamic framework. As a result of her work, Ebadi has frequently seen the inside of Teheran's infamous prisons.

Ebadi notes that women are oppressed in Iran and other Middle Eastern countries because of the cultural aspect of "male dominance." Forced to resign as a judge in 1979 because of the Islamic Revolution, Ebadi's new international stature is considered a powerful tool to further women's equality and human rights in general in Iran.

Although many doors remain closed, Iranian women have made advances not seen in more heavily-restricted Muslim nations such as Saudi Arabia. Muslim clerics have ceded ground on social issues and earlier this month Iran's first female police officers joined the force.

But many barriers still remain. A woman in Iran still needs her husband's permission to work or travel abroad, and a man's court testimony is considered twice as important as a woman's. Some think that laws reserving certain jobs for men could be challenged if Ebadi were to run for president of Iran in 2005.

# Fall Peace Festival



## Celebrate Peace & Justice

Saturday, November 22, 2003  
10 a.m. to 4:00 pm  
Civic Center Music Hall - Hall of Mirrors  
Downtown Oklahoma City

**Booths & Tables of Social Justice Groups**  
**Live Music & Entertainment All Day**  
**Snacks & Refreshments**

**Holiday Shopping Opportunities**

*Supporting Human Rights, Social Justice &  
Environmental Organizations*

*sponsored by*

*The Peace House*

*The Spiritual Walk for Peace in OKC*

*Social Justice Committee of First Unitarian Church*

*all participating groups & everyone who attends*

## PROUDLY ANNOUNCING THE OPENING OF MY LAW OFFICE

A. TERRY COCON

6425 EAST RENO SUITE #106  
MIDWEST CITY, OKLAHOMA 73110  
(405) 922-7366

Divorce • Child Custody • Paternity  
Child Support • Modify Decree • Contempt  
Domestic Violence • Guardianship

CALL ME FOR ALL YOUR LEGAL NEEDS  
LEGAL SERVICES YOU CAN TRUST AND AFFORD

## Film Notes



*Radical Harmonies* is a groundbreaking documentary for everyone who ever loved, or wanted to be, a girl with a guitar. Through festival and performance footage, interviews and archival material, this documentary charts the evolution of the Women's Music Cultural Movement from the 1970s to recent years.

*Laughing Matters* is an entertaining film showcasing four unique veteran performers - each from different backgrounds yet all of whom share two things in common: each is a professional stand-up comedian, and all have been out lesbians for the entire duration of their careers. Celebrated comedians Kate Clinton, Marga Gomez, Suzanne Westenhoefer, and Karen Williams have followed their hearts as performers, forging a path for other lesbian comedians.

## PFLAG COOKIES!!!!

The PFLAG Cookie Cookbook is Now Available for Sale. This Cookbook will make a great holiday or any other occasion gift with over 400 recipes from 5 continents.

Some notable contributors include: Herland Legal Defense Fund's "Family Cookin", 90 PFLAG Chapters, Matthew Perry, Senator John Kerry, Senator Dianne Feinstein, Debbie Reynolds, Outsports.com, Ann Richards, Florence Henderson, 20 Choirs, Prime Timers, Harvey Fierstein, Mayor Willie Brown, Congresswoman Tammy Baldwin, Congressman Barney Frank, Soulforce Tulsa, C.A.R.E.S, OUT Magazine, Lorna Luft (Judy Garland's daughter), Betty Buckley (*Cats*), Senator Barbara Boxer, and employee groups such as Boeing Employees (BEAGLES), IBM, Intel, Ford, SBC Employees, SPECTRUM, Citigroup Employees, Kraft, GM, The Hartford Employees, 3M, and PriceWaterhouseCoopers.

Countries represented in the cookbook include the U.S., Canada, Israel, Mexico, England, Scotland, Wales, Russia, Singapore, Switzerland, South Africa, India, Australia, New Zealand, Germany, and Finland.

To purchase this cookbook visit our web site at <http://www.Pflagtulsa.org> where you can order the cookbook at a secure Paypal site. This allows you to use a credit card and performs foreign currency exchange. Discounts are available (by mail order only) for other PFLAG chapters that buy at least 25 copies for their own resale.

Or return this order form and your check or money order (made out to PFLAG Cookbook) in United States Dollars to:

PFLAG Cookbook, P.O. Box 52800, Tulsa, OK 74152

Number of Cookbooks x \$15.00 =

Flat Rate Shipping & Handling =

U.S. (1 copy) \$3.00

U.S. (2 or more) \$4.00 Entire Order

Sales Tax Per Book (7.917%) =

(Oklahoma Residents Only = \$1.18 each)

Enclosed is my check or money order for \$ \_\_\_\_\_

Mail Book(s) To:

Name \_\_\_\_\_

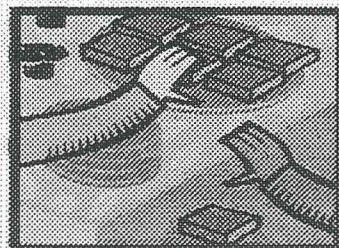
Address \_\_\_\_\_

City \_\_\_\_\_ State \_\_\_\_\_ Zip \_\_\_\_\_

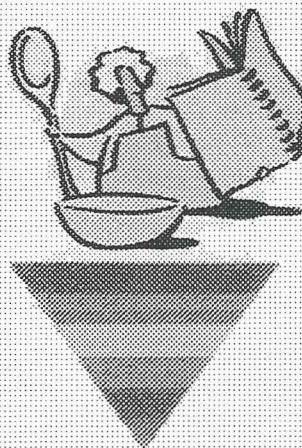
Country \_\_\_\_\_

Orders will be filled in the order they are received. We anticipate shipping to begin October 31st.

## PFLAG COOKIES!!!!



PARENTS, FAMILIES AND  
FRIENDS OF LESBIANS AND GAYS  
TULSA OKLAHOMA CHAPTER



## Your Ad Could Be Here!

Call Herland at 521-9696  
or email at [herlandsisters@cox.net](mailto:herlandsisters@cox.net)  
to place your ad.

## Website of the Month

[thetruthaboutgeorge.com](http://thetruthaboutgeorge.com)

## Town Hall Meeting for Peace

The Spiritual Walk for Peace folks are hosting a Town Hall Meeting on Tuesday, November 4th (one year before the 2004 elections) on the topic "What can we do to create greater peace and justice for all?" This will be an opportunity for people to speak out on issues of concern to them, both local and national, and get acquainted with people with similar concerns.

The meeting will be from 7 pm - 9 pm at the First Unitarian Church, 600 NW 13th Street, Oklahoma City.

Co-sponsors include Herland Sister Resources, the Social Justice Committee of the First Unitarian Church, Oklahoma City NAACP, The Interfaith Alliance, Joy Mennonite Church, The Peace House, Pax Christi, Central Oklahoma Human Rights Alliance, Cimarron Alliance Group, the Oklahoma Gay and Lesbian Political Caucus, Mayflower Congregational Church, and the Church of the Open Arms.

Check out some of the best women's basketball - right here in Oklahoma. Don't be fooled into thinking only the large universities have quality basketball... Oklahoma NAIA schools boast at least two players in the WNBA from small Oklahoma universities. And another upside is that at these games, there's not a bad seat in the house.

**NCAA Universities**

**Oklahoma State University (OSU)**

Date	Opponent	Time	Location
11/07/03	Oklahoma Flyers (Exhibition)	7:00 PM	Home
11/13/03	NW Sports Tours (Exhibition)	7:00 PM	Home
11/22/03	Tulsa	12:00 PM	OKC
12/02/03	Michigan State	7:00 PM	Home
12/05/03	Sam Houston State	7:00 PM	Home
12/06/03	Fresno State	2:00 PM	Home
12/06/03	Western Illinois	4:00 PM	Home
12/31/03	Texas - Arlington	2:00 PM	Home
01/02/04	South Alabama	7:00 PM	Home
01/07/04	Texas A&M	7:00 PM	Home
01/13/04	Kansas State	7:00 PM	Home
01/24/04	Texas Tech	2:00 PM	Home
01/28/04	Iowa State	7:00 PM	Home
02/07/04	Texas	2:00 PM	Home
02/14/04	Missouri	6:00 PM	Home
02/28/04	Oklahoma	12:00 PM	Home
03/03/04	Baylor	7:00 PM	Home

**University of Oklahoma (OU)**

Date	Opponent	Time	Location
11/13/03	Bball Travelers (Exh)	7:00 PM	Home
11/18/03	OC (Exh)	7:00 PM	Home
11/22/03	Oral Roberts	2:30 PM	OKC
11/24/03	SE Missouri State	7:00 PM	Home
12/07/03	Utah	2:00 PM	Home
12/21/03	Tennessee	2:00 PM	Home
12/28/03	Illinois	2:00 PM	Home
12/30/03	Wichita State	7:00 PM	Home
01/07/04	Nebraska	7:00 PM	Home
01/17/04	Oklahoma State	3:00 PM	Home
01/24/04	Baylor	3:30 PM	Home
02/07/04	Texas A&M	12:00 PM	Home
02/14/04	Kansas	5:00 PM	Home
02/18/04	Colorado	7:00 PM	Home
02/25/04	Texas Tech	7:00 PM	Home
03/02/04	Texas	8:00 PM	Home

**University of Central Oklahoma (UCO)**

Date	Opponent	Time	Location
12/04/03	Eastern New Mexico	6:00 PM	Home
12/06/03	West Texas A&M	4:00 PM	Home
01/08/04	Texas A&M - Kingsville	4:00 PM	Home
01/10/04	Texas A&M - Commerce	6:00 PM	Home
01/22/04	East Central	6:00 PM	Home
01/24/04	SE Oklahoma State	4:00 PM	Home
01/27/04	NE Oklahoma State	6:00 PM	Home
02/07/04	SW Oklahoma State	6:00 PM	Home
02/19/04	Tarleton State	6:00 PM	Home
02/26/04	Cameron	6:00 PM	Home
02/28/04	SW Oklahoma State	TBA	TBA

**NAIA Universities**

**Langston University (LU)**

Date	Opponent	Time	Location
11/05/03	Wiley College	5:30 PM	Home
11/08/03	Park College	4:00 PM	Home
11/18/03	OBU	7:00 PM	Home
11/24/03	SNU	6:00 PM	Home
12/01/03	Jarvis Christian	6:00 PM	Home
01/03/04	Huston-Tillotson	5:30 PM	Home
01/06/04	SW Assemblies of God	5:30 PM	Home
01/17/04	UT - Permian Basin	5:30 PM	Home
01/19/04	Texas Wesleyan	5:30 PM	Home
01/31/04	Bacone	5:30 PM	Home
02/07/04	Paul Quinn	5:30 PM	Home
02/09/04	Texas College	5:30 PM	Home
02/21/04	Houston Baptist	5:30 PM	Home
02/23/04	Texas A&M International	5:30 PM	Home

**Oklahoma Baptist University (OBU)**

Date	Opponent	Time	Location
11/07/03	Univ of Ill - Springfield	6:00 PM	Home
11/08/03	Doane College	1:30 PM	Home
11/14/03	Knoxville College	8:00 PM	Home
11/21/03	Houston Baptist	6:00 PM	Home
11/22/03	Bacone College	6:00 PM	Home
12/09/03	Mid America Christian Univ	6:00 PM	OCU
12/10/03	Texas College	7:00 PM	OCU
01/03/04	John Brown University	1:00 PM	Home
01/08/04	Wayland Baptist University	6:00 PM	Home
01/10/04	Lubbock Christian University	1:00 PM	Home
01/17/04	SNU	6:00 PM	Home
01/31/04	NW Oklahoma State Univ	6:00 PM	Home
02/05/04	OC	6:00 PM	Home
02/12/04	SGU	6:00 PM	Home
02/14/04	OCU	6:00 PM	Home
02/19/04	USAO	6:00 PM	Home

**NAIA Universities**

**Oklahoma Christian University (OC)**

Date	Opponent	Time	Location
11/06/03	Bacone College	8:00 PM	Home
11/11/03	Texas Wesleyan Univ	5:30 PM	Home
11/21/03	Bethel, Ks	7:00 PM	Home
11/29/03	SW Oklahoma State	6:00 PM	Home
12/01/03	Kansas Wesleyan University	6:00 PM	Home
12/13/03	Panhandle State Univ	2:00 PM	Home
01/10/04	SGU	6:00 PM	Home
01/15/04	OBU	6:00 PM	Home
01/22/04	Lubbock Christian University	6:00 PM	Home
01/24/04	Wayland Baptist University	1:00 PM	Home
01/31/04	John Brown University	6:00 PM	Home
02/07/04	OCU	6:00 PM	Home
02/19/04	NW Oklahoma State Univ	6:00 PM	Home
02/23/04	SNU	7:00 PM	Home

**Oklahoma City University (OCU)**

Date	Opponent	Time	Location
11/14/03	Bethany (Kan)	6:00 PM	Home
11/15/03	Paul Quinn	3:00 PM	Home
11/21/03	Columbia	7:00 PM	Home
12/09/03	Texas College	8:00 PM	Home
12/10/03	Langston	5:00 PM	Home
12/29/03	William Jewell	8:00 PM	Home
12/30/03	Claflin	8:00 PM	Home
01/17/04	OC	6:00 PM	Home
01/22/04	NW Oklahoma State Univ	6:00 PM	Home
01/24/04	OBU	6:00 PM	Home
02/05/04	John Brown University	6:00 PM	Home
02/16/04	SGU	6:00 PM	Home
02/19/04	Lubbock Christian University	6:00 PM	Home
02/21/04	Wayland Baptist University	1:00 PM	Home
02/26/04	SNU	6:00 PM	Home
02/28/04	USAO	6:00 PM	Home

**St. Gregory's University (SGU)**

Date	Opponent	Time	Location
11/07/03	William Penn	4:00 PM	SNU
11/08/03	Mid America	5:00 PM	SNU
11/24/03	Texas Wesleyan	6:00 PM	Home
11/28/03	SW Oklahoma University	6:00 PM	OCU
12/06/03	Missouri Western Univ	TBA	TBA
01/17/04	John Brown University	1:00 PM	Home
01/19/04	OCU	6:00 PM	Home
01/22/04	OBU	6:00 PM	Home
01/24/04	USAO	6:00 PM	Home
02/05/04	SNU	6:00 PM	Home
02/19/04	Wayland Baptist University	6:00 PM	Home
02/21/04	Lubbock Christian University	1:00 PM	Home
02/26/04	NW Oklahoma State Univ	6:00 PM	Home
02/28/04	OC	6:00 PM	Home

**Southern Nazarene University (SNU)**

Date	Opponent	Time	Location
11/07/03	Mid America	6:00 PM	Home
11/08/03	William Penn	3:00 PM	Home
11/15/03	Wilberforce	6:00 PM	Home
11/21/03	Texas College	7:00 PM	Home
12/11/03	York, NE	6:00 PM	Home
01/05/04	OC	6:00 PM	Home
01/08/04	OCU	6:00 PM	Home
01/15/04	SGU	6:00 PM	Home
01/22/04	Wayland Baptist University	6:00 PM	Home
01/24/04	Lubbock Christian University	1:00 PM	Home
01/29/04	John Brown University	6:00 PM	Home
02/07/04	OBU	6:00 PM	Home
02/21/04	USAO	6:00 PM	Home
02/28/04	NW Oklahoma State Univ	6:00 PM	Home

**University Of Science & Arts of Oklahoma (USAO)**

Date	Opponent	Time	Location
11/13/03	SW Assemblies of God	6:00 PM	Home
11/22/03	Bethel College	3:00 PM	Home
12/29/03	Claflin College	6:00 PM	OCU
12/30/03	William Jewell	6:00 PM	OCU
01/08/04	OC	6:00 PM	Home
01/29/04	OBU	6:00 PM	Home
01/31/04	SNU	6:00 PM	Home
02/05/04	Wayland Baptist University	6:00 PM	Home
02/07/04	Lubbock Christian University	1:00 PM	Home
02/09/04	NW Oklahoma State Univ	7:00 PM	Home
02/12/04	John Brown University	6:00 PM	Home
02/14/04	SGU	6:00 PM	Home

**Herland Sister Resources**  
2312 NW 39th Street  
Oklahoma City, OK 73112

NonProfit Org.  
U.S. Postage  
**PAID**  
Oklahoma City, OK  
Permit No. 861

Return Service Requested



PHONE: 943-1467

**CITY ANIMAL HOSPITAL**  
2910 N.W. 23  
OKLAHOMA CITY, OKLAHOMA 73107

N. WORLAND DVM  
D. TRAVIS DVM

D.M. HAWKINS, DVM

**REBECCA R. HOLT, Ph.D.**

Clinical Psychology  
(405) 321-2148

Box 5119  
Norman, OK 73070

Individuals - Couples  
Family Therapy, Retreats

**Julia Irwin, M.D., P.C.**

Psychiatrist

Doctor's Park  
500 E. Robinson, Suite 600  
Norman, OK 73071  
(405) 321-3719

*Young  
And Older Adults*

**DOROTHY E. HEIM**

Attorney at Law  
(405) 691-4949  
dheim033@yahoo.com

Call me with your legal questions:

estate planning  
contract issues

personal injury  
small business



Sandy Ingraham, J.D., M.S.W.  
Attorney-at-Law  
Ingraham & Associates, PLLC

Estate Planning, Wills, Trusts, Probate, Adoption, Contracts

Route 2, Box 369-B  
McCloud, OK 74851

Tel. (405) 964-2072  
Ingraham@mcloudteleco.com