

Quarterly Report and Neighborhood News



The Newsletter of the Women's Communities Association

Vol. III No. 4 Fall 1997

W Q M Y N



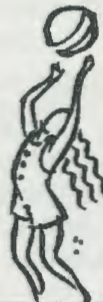
More children participated in events at this year's Festival. See inside for details!



**Trionne Barrett
wins
The O'Brien Award
for
Outstanding Achievement in
Women's Competition**

**Michelle
(who prefers to remain
anonymous)
wins
Second place**

**Sue Ellen's
wins the
Volleyball Tournament**



A RANDOM ACT


Kimberly Truax

I heard a lovely story about a woman in San Francisco who paid the tolls for six drivers behind her on the Golden Gate Bridge. Imagine their surprise and pleasure when they heard the news! In fact, they probably felt so good, they couldn't wait to do a good deed for somebody else. Since hearing this story, I try to perform at least one random act of kindness and/or senseless beauty each day.

Join me - do your deeds without expecting anything in return. Over the course of time, good will come back to you. I think that the women who ultimately succeed in life are those who truly believe this.

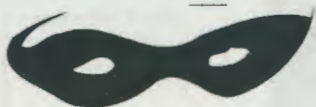
Up And Coming....

MARDI GRAS '98 AT LEE PARK



It's getting to be that "...Jambalaya, crawfish pie, file gumbo...." time again, and this year we will celebrate at Lee Park on Saturday, February 7, 1998!!!! We are expecting Mardi Gras '98 to be a spectacular event and want each and every one of you to be a part of it.

Please let me hear your ideas for making this the best Mardi Gras ever; we need everyone's help and input. If you would like to be a part of the team, call Kimberly at 972-671-8765.



HOLIDAY PARTY

Those eternal sleigh-bells are going to be ringing before you know it, which means the WCA Annual Holiday Gift-Sharing Party, scheduled for Dec. 13, is just around the corner. This is one area-wide social event which really demonstrates what WCA is all about. Aside from meeting women from across the metroplex, participating in our silent auction and the general reveling and merry-making that we are famous for, members are given the opportunity to make a real difference in the lives of elderly women during a time of the year when people can be their loneliest and most forgotten. Bring your wrapped gifts and join us afterwards when we distribute your presents to women who live in local nursing homes. Some suggestions for gifts are skin lotions, socks, houseshoes, food baskets, etc. Or if you prefer, bring a \$10 donation which go toward our Emergency Intervention Fund.

INDEX

Area Reports	p. 4
Area Coordinators	p. 7
Area Map	p. 8
B Board	p. 13
Community Calendar	p. 13
Director's Comments	p. 3
Membership Form	p. 12
Sponsor Page	p. 6
Up And Coming	p. 1
Womenspeak	p. 11

The Fine Print

The Neighborhood News and Report publishes quarterly
Free to members

Deadlines for articles:

the date of the changing of the seasons
March 21
June 20
September 21
December 21

Advertising rates:

Size	Qtr	Annual	Member
Business card	\$25	\$90	\$23/\$80
1/4 Page	\$35	\$125	\$32/\$110
1/2	\$60	\$234	\$55/\$185
Full Page	\$100	\$360	\$80/300

Mail copy to
WCA Box 180777 Dallas 75218
Attn: Mary Jo Madden

Disclaimer

The official publication of the Women's Communities Association
Box 180777
Dallas Texas 75218
214 319-6696

All information is written by the Executive Director, the Newsletter Editor, or the Programs Chair, unless otherwise noted.

Articles do not necessarily reflect the opinions of the organization, the Board of Directors, or the Newsletter Committee.

Fundraising/Special Events:

Kimberly Truax 972-671-8765

Neighborhood Development & Program Development:

Christine Jarosz 214-319-6696

Finance: Ruth Tunnell 214-319-6696

Data Management:

Deb Floyd 972-690-8971

Crisis Intervention Resource Coordinator:

Anne Weis 214-324-570

Women's Festival:

Heather Raich 214-528-532

Christine Jarosz 214-319-6696

Yellow Rose Ball & Zoo Do:

Sharon Huber 817-294-2447

Resource/Referral Coordinators:

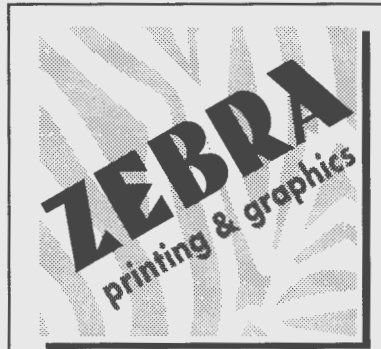
Mary Ellen Edwards - Ft. Worth 817-548-1735

Newsletter Design and Copy Editor:

Mary Jo Madden 214-821-8446

Board of Directors

Mary MacGregor, President
Deb Floyd, Secretary
Ruth Tunnell, Treasurer
Patty Sanchez
Kimberly Truax
Carol West
Cindy Baldhoff
Christine Jarosz, Director



J'AIME JOINER

Owner

4054 McKinney Avenue
Suite 103
Dallas, Texas 75204
(214) 599-9263 FAX
(214) 599-9264

NO EXCUSES!!!

For those who want to transmit copy electronically, the e-mail address for newsletter stuff is

mjmale@airmail.net or
70312,3423 on compuserve.

You can fax your copy in - (214)821-8446

Snail mail address is in the box
← at the left (for the old-fashioned way of communicating!)

The Women's Communities Association is a non profit educational corporation registered in the State of Texas.

VISION: A better world for women.

PURPOSE: We are an organization creating an interconnective, geographic network through which women (especially older women, women who live alone, and lesbians) can find support, resources, and enrichment.

MISSION: Two thousand (2,000) members by the year 2000.

Thanks to all the volunteers...

there are so many and it could not happen without you.

A special thank you to Margaret Walden, who did so many things that she was indispensable.

We owe a big thanks to:

Allison Cole, Joe Adams, Dottie Holt, Mary MacGregor, Judy Cannon, BJ Lacasse, Linda Lee, Carole Taylor, Luanne Schultz, Ann Caldwell, Dee Pennington, Clarissa Carter, Janet Park, Kim Wallace, Shawn McDonough, Laney McGriff, Michelle English, Julie Kortidis, Sandy Thompson, Sandy Edmondson, Kelli Pickard, Carol Currie, Janell Jenkins, Judy Danielson, Cathy Brock, James of Log Cabin Republicans, Zack Ford, Sheila Coughlin, Cindy Baldhoff, Ruth Tunnell, Lory Masters, and the many, many women who helped at the last minute on that wet, rainy field.

Pool Service

L
A
M
B
D
A

By Appointment

Lisa K. Johnson
(214) 925-2880
Dallas, TX

DIRECTOR'S COMMENTS.....

Christine Jarosz

Besides developing the 46 WCA neighborhood areas themselves, the Women's October Festival has been the most ambitious, most challenging, and the most successful undertaking in WCA's short history. Conceived in part by many, coordinated by two, and supported by over 70 volunteers and sponsors, this effort was very successful. Hampered (or should I say dampened) by the rain, over 125 came to the Festival to enjoy the food, participate in the different competitions, check out the vendors, listen to the music, delve into the unknown with psychics, watch the awards presentations (a most engaging woman was presented with the first O'Brien Award); or they came just to have a plain good ole time. That's what they wanted and that's what they got. A really good time. People came early and stayed late. There were tents set up all around with plenty of seating for those who wanted to eat, play games, or just talk. There were far more children present this year. It was interesting to watch them have fun but far more intriguing to watch them cheer on and otherwise support their Mothers as their Mothers entered competitions. The volleyball competitors were a real treat, too. Their energy, their grace, and their athletic ability! Inspiring! They were wonderful. It was totally thrilling to hear people laugh at the "u-haul" packing competition. The competition, as I am sure you were aware, was designed to be a humorous look at our own culture, to play and have fun with who we are. To see that no matter how different we are, we are also very much the same. From

the comments I heard, I believe that it not only made women laugh but it also touched them with memories. It was great fun.

The rain did, in fact, create some problems-the field was too wet for softball, exhibit booths were forced to close early or not open at all, many did not think we would go forward with the event so they stayed away. But, on the other hand, it was great to see the incredible spirit of cooperation among strangers to overcome the conditions made difficult by the rain. And while the rain kept many away, **we were still able to make over \$2000** (after expenses) at the event. Since this was an important fundraiser for us as well as a very important event, it was good to do better than break even as we were expecting with the rain. So for those who made it out there, we thank you. We are supported by Membership Dues and the money raised at three Fundraisers throughout the year. This event was critical for WCA. Your participation was very important..

The success of the event can be measured in another way. It brought WCA to the attention of many women who had not heard of the organization before the Festival. We welcome them and wish us all good luck in the future as we do many more things together.

Actually when I think about it, there have been other great successes in WCA. Our really great newsletter, so beautifully done by Mary Jo Madden, reaches over 2000

women. Our Resource/Referral Line, under the guidance of the Director, offers help and direction to hundreds. The WCA 10% Solution (the Crisis Intervention Program) under the direction of Anne Weis, has stepped in on many occasions to provide essential help. And our Neighborhood Development Program, as it constantly ebbs and flows, is experiencing substantial growth with the influx of some great new leaders. However though our successes are many, WCA's goal of bringing women together to talk, experience one another, and make plans to go forward to make a difference **was totally exemplified in this one event.** Perhaps that is why the Festival seems like a crowning achievement.. It shows what can be accomplished.. by women working together...everybody doing what they like to do...no more and no less. The Festival was a miniature version of how I see WCA...everyone doing a little ...doing what they like to do...and all together accomplishing a great deal for everyone. The Women's Festival gave women a reason to come together, gave them the opportunity to talk, explore new ideas, and provides great expectations for the future. Thank you each and every one of you who made this event a dream. It is less than 330 days to the Festival in 1998. Get ready and don't be late!!

PS If you have not become a Member of WCA, this would be a great time. You can help insure that activities like the Festival will continue.

Concept
CLEAN

DONNA BIGELOW

2341 Gross Road, Dallas, Texas 75228, (214) 826-6133

*Carpets
Upholstery
Orientals
Dhurries
Haitians
Suede*

DIALOGUE 2000

Judith Cannon, Ph.D.
Team Building, Conflict Management
and Professional Development

3609 Cedar Springs Rd. ■ Dallas, Texas 75219
Phone: 214-521-1236 ■ Fax: 214-521-7334

AROUND TOWN

AREA 1

Dear WCA Members,

I wanted to let you know how much I appreciate all the work you did to raise money to help me get transportation. Well, as most of you know I did get a car, a 1985 Toyota. Low miles and in great condition. Thank you guys so much!!! I don't know what I would have done without you. WCA made it possible for me to get my kids where they need to go, do what I need to do for my family, and go back to school so I can get a better job. I hope if there are other women out there who need help they will not let pride or fear get in the way of asking for what they need. The Women of WCA were more than willing to help me. Hope to see you all soon.

Thanks again.

Love you guys -
Harriet & kids

AREA 9

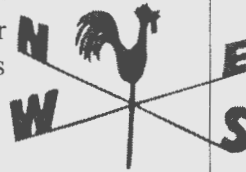
Audrey

The East Dallas areas around White Rock Lake have been meeting on the third Sunday of the month. The weekend meetings seem to be a better time than the Wednesday nights at Cafe Brazil. Christine and Kathryn's have been gracious enough to invite us into their homes, along with our covered dishes. We get to visit with some people we have been seeing every month. Sometimes new folks show up to see what is happening, and sometimes these new people are just people you haven't seen for years.

AREA 15

Judy Danielson

Calling all Women of Area 15!!! I know you're out there. I see you at Albertson's, K Mart, Home Depot, and PetSmart. What I don't know is how to get you motivated to come to a WCA meeting. So, I'm asking for your help. While we have formed an excellent core group, we would love to add new members to our group. We would love to hear your ideas about what you want your area WCA group to be. Let us know what it would take to get women to come together for a meeting. Is our meeting time inconvenient??? Do you not know how to reach us to find out about meetings??? Do we need to choose more conveniently located meeting places??? Our regularly scheduled meeting time is the Fourth Sunday of each month from 3:00 p.m. to 6:00 p.m. Please call Cathy and Judy at (972) 240-4243 or Carol at (972) 644-1739 for meeting information or with any other input or suggestions you might have.



We will meet at Audrey's house (Under Construction) in November, and have a party in December. So come on over, bring a friend, wear your best shoes, but come on by. We have a phone tree so you should be getting calls about what, when and where, if not call me.

AREAS 28-31

Notes from the Cliff Dwellers: The **Oak Cliff** membership drive is on and we are all gearing up for "2000 by 2000". This is the WCA's goal of 2000 members by the year 2000. A challenge was issued by our two new area coordinators, Laney McGriff and Kim Wallace, at our most recent meeting: that each member bring one new guest to our next get-together. With 426 total WCA members presently, we are at 21% of our goal for the year 2000. That's a lot of growth, but not unreachable. What a difference 2000 members could make!

We are also kicking around some ideas regarding avenues to take in contributing to the Oak Cliff community. We have found that, though many of us desire to do some sort of volunteer work, it is not always feasible with family and work schedules. The Oak Cliff WCA may be able to provide a service to our community by simply dividing up some of the volunteer efforts among the entire group. This keeps us all involved in the betterment of Oak Cliff through active community participation, but allows us to divide up the time.

The Cliff Dwellers are fired up and ready to make a difference. So, if you are out there looking for a cause and ready for some community involvement with your sisters (or you just want to have a great social outlet and meet your neighbors - even if you're not from Oak Cliff), join us! Everyone is welcome. The get-togethers are fun and the conversation lively. What else are you going to do on a Sunday afternoon? Watch football?

Meetings are held on the first Sunday afternoon of each month.

The next "soiree" will be December 7, from 2:00 to 5:00, at Shawn and Kim's house, 1606 Elmwood (214) 941-9745. Bring a beverage and a covered dish (if you cook, that is - if not, some ice will do nicely). Weather permitting, be prepared for some very competitive Ping-Pong.

That's the latest and greatest, WCA fans. Looking forward to seeing the Cliff Dwellers at our next "do", and the rest of the WCA members at the Annual Holiday Gift-Sharing Party.

WCA is proud to support the
Women's Chorus of Dallas.

Visit them on the WEB -

www.TWCD.org



Stories from the Festival

by CJ

There Are Sponsors and Then There Are Sponsors

We want to thank Jaime Joiner of Zebra Printing who did more than her share to make this event so successful. Not only did Jaime donate all the printing (over \$500), she also contributed in a big way to the O'Brien Award. And she even fielded a volleyball team. Thank you, Jaime.

Penny Youngblood and Susan Spalter went way and above this year, too. Thank you very much.

State Rep Donates Chairs

Our State Representative, Harryette Ehrhardt, always there for her constituents, was there for us. She volunteered/donated chairs and tables for the Festival.

Christine Jarosz Puts Her Shoulder to The Hoe

On the Monday afternoon following the Festival, the YMCA field crew noticed some damage to their field. Because of the rain, deep tire marks were left on the softball field by the u-haul. Jim Wright from the YMCA called in a panic and asked if we wanted to do the repairs or pay to have them done. Ever up to a challenge, Christine picked up her tools and headed downtown to repair "the field of dreams". A job well done, Christine.

Looking at the Future

Carol West was the most popular woman at the Festival. As a matter of fact, she alone made more money (proportionately) than any other event. What did she do, you ask? Carol read tarot cards. Who would have thought you would have been so insightful, Carol.? Please make plans to join us next year.

Securing the Field

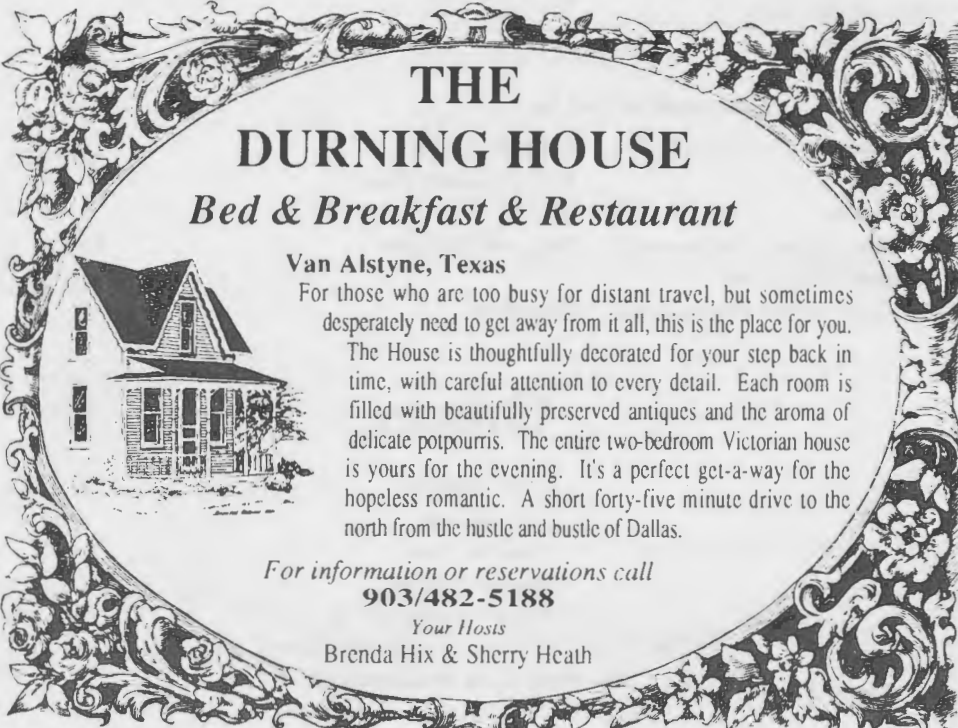
Throughout the day, there were numerous groups of individuals who wanted access to the field although they knew a private event was occurring. These intrusions, and possible problems, were deftly handled by our security. The security force, members of the Women's Chorus of Dallas, was superbly led by Dr. Sue Sherrod and Jude Hammett. While trouble is never expected, it is always a good idea to prepare for it. Thanks for keeping us safe.

This year, following the suggestion of Deb Ryburn, the Festival put a greater emphasis on Individual Sports Competition by awarding prizes to winners and a grand champion award to the overall winner. Competitors were required to participate in four out of seven skill events including the baking contest, the pumpkin carving or any of the traditional sports-golf, basketball, soccer, punt, pass, and kick, or softball to be eligible to win the O'Brien Award. This trophy was presented for Outstanding Achievement in Women's Competition. This competition was very well received.

The O'Brien Award was conceived to honor one of our community's leading citizens, Barbara O'Brien. The Award was designed to honor the grace, the courage, the leadership, the perseverance, the persistence, and the overall love that is Barbara O'Brien. The trophy will be presented annually to the successful competitor at the Festival. It will be passed on in a ceremony by the previous recipient. The winner actually receives a smaller version of the trophy. The glass and wood world globe will be on display at different locations throughout the year. This year's winner requested that the trophy be displayed first at Sue Ellen's on Cedar Springs in Dallas. So as soon as Kathy Jack, Sue Ellen's manager, completes their trophy case sometime in November, we will have another ceremony. So for those of you who are interested, here's your opportunity to see this wonderful trophy. Maybe you will start making plans to earn it next year.

If you missed the Awards presentation, you missed something very nice. While Barbara O'Brien was scheduled to present the award, she was not aware that the trophy had been named to honor her. You can imagine her surprise as the small presentation was made. We all loved honoring her and hope that she was pleased.

This year's recipient was Trionne Barrett, who could not have been a more gracious winner. She certainly embodied the spirit of the trophy and honored us all. The competition ended around 4pm on Saturday. Trionne and her party were ready to leave. The presentation ceremony was scheduled for 6pm. Presenters had not arrived. It was raining. It was a difficult moment. But we asked Trionne if she could come back for the ceremony. And with great grace, she said she would be glad to and she did. She lives in far north Dallas county. She accepted the award from Barbara and made a small speech. It was very nice and so our first ceremony was just great. Thank you so much Trionne for your winning spirit.



**THE
DURNING HOUSE**
Bed & Breakfast & Restaurant

Van Alstyne, Texas

For those who are too busy for distant travel, but sometimes desperately need to get away from it all, this is the place for you. The House is thoughtfully decorated for your step back in time, with careful attention to every detail. Each room is filled with beautifully preserved antiques and the aroma of delicate potpourris. The entire two-bedroom Victorian house is yours for the evening. It's a perfect get-a-way for the hopeless romantic. A short forty-five minute drive to the north from the hustle and bustle of Dallas.

For information or reservations call
903/482-5188
Your Hosts
Brenda Hix & Sherry Heath

The Sponsor Page

WCA wishes to express gratitude to the following
ANNUAL SPONSORS:

Support from these sponsors allows the WCA to function on a daily basis.

PEGGY JAROSZ	Cathy Brock and Judy Danielson
JOHANNA JAROSZ-Baldwin	Diana Rix
ROSIE CRISWELL	Linda Vozzella
SAMMIE WESTER	Julie Kortidis
MARTY HAYES	Doris Turner
CATHERINE HUEY	Deb Coddington
KATHRYN RAFTER	LORRIE DENNIS
ANNA AND LEE Willcock	CHRIS CZARNECKI
MARSHA ROSENBERG AND MARTHA BARRETT	JANE NIGHTINGALE
JOYCE POWELL AND HELEN MARTIN	BARBARA SMALLWOOD
ANGIE DE LA CRUZ	TRACY ANDERSON
DR. SUE SHERROD AND JUDE HAMMETT	Liz Martin
PS TRAVEL-MARY Wakefield	SUE SHERROD AND JUDE HAMMETT
PROVE UP LEGAL	Lin Holmes-Ford
MARY HARDGROVE AND JO LYNN SOUTERN	NAOMI MADRID AND ANGELA GREEN

Fall Festival Sponsors

CHRISTINE JAROSZ	PEGGY SMITH INVITATIONAL JIGSAW PUZZLE TOURNAMENT
Trish Houck	Reilly Houck's Fun for Children Activities
HILLCREST FINANCIAL MORTGAGE LOANS	Vendor's Big Top
Fink and Company	Puzzle Tournament
Friends of Marilyn Lipp	The Marilyn Lipp Sound Stage
Dallas Cake Affaires	The Bake Off
CAVEN ENTERPRISES/ SUE ELLEN'S	Ice/Drinks
***DR. SUE SHERROD	THE FIRST AID STATION
SPARKLETT'S WATER	
ZEBRA PRINTING	

Sponsored in Part by

LYNN JOHNSON	BASKETBALL
Deb Floyd	Deb's Scrabble Party
Kathy Hewitt	Golf
Kim Wallace & Shawn McDonough	Flags and Pennants
***Avalon Herbal and	
Avalon Circle of Reiki Healing Energy	DRUMMING

OTHERS

Cindy Baldhoff
P Compton
Lory Masters
Margaret Walden
***ELENA UNDERWOOD
**THE PARK CITIES/OAK LAWN NEIGHBORHOOD
**THE WHITE ROCK NEIGHBORHOOD
**MARY MACGREGOR AND JUDY CANNON

The We All Love A Hero Committee

TWALAHC

The O'Brien Award

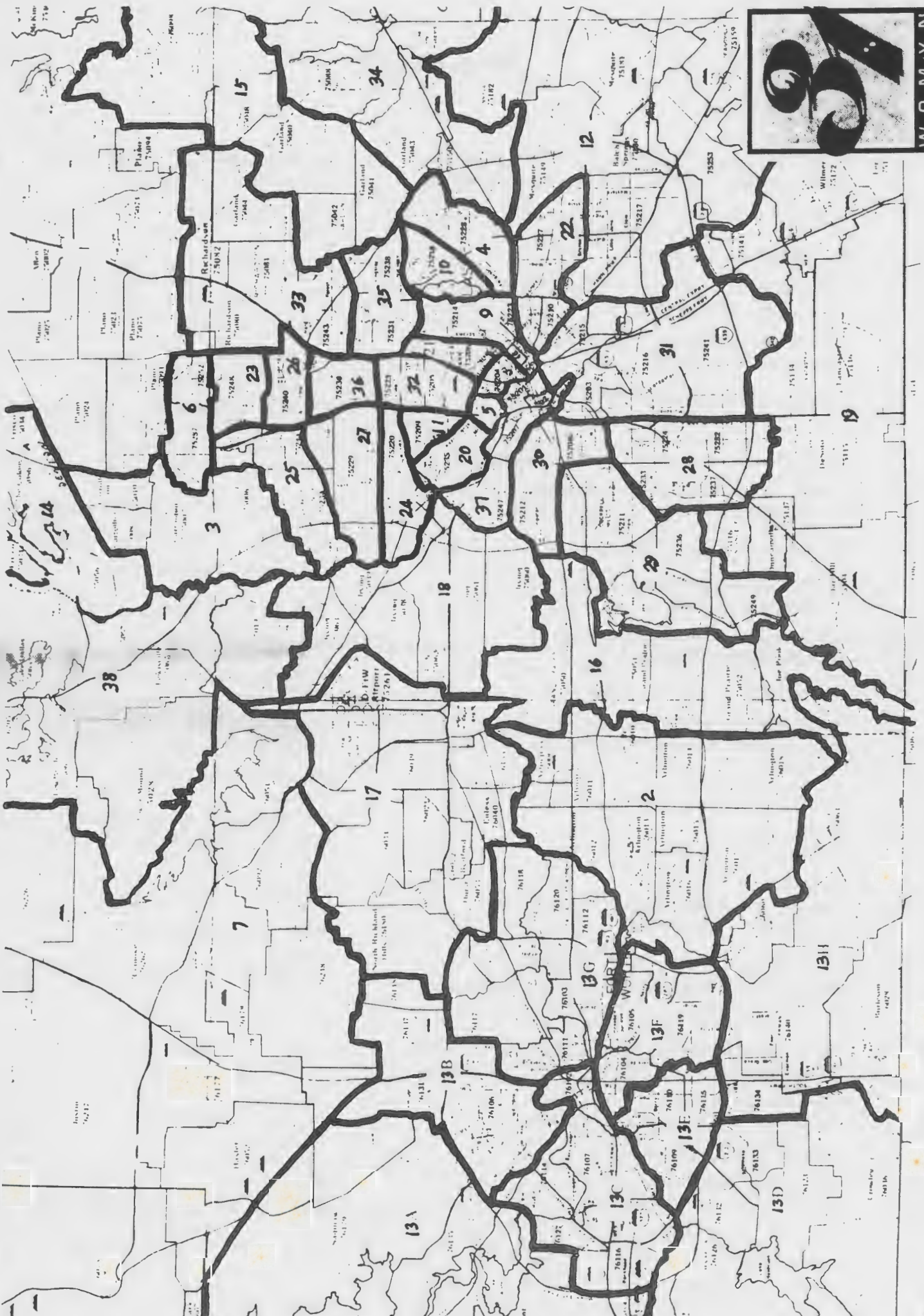
CAROLE TAYLOR
JAIME JOINER
LUANNE SCHULTZ
JOE ADAMS
LORY MASTERS
SUSAN SPALTER
PENNY YOUNGBLOOD
CHRISTINE JAROSZ
R TUNNELL
NANCY ADAMS
DOTTIE HOLT
LINDA LEE

WCA AREAS

- | | | | |
|-----|--|-------|--|
| 1 | Allen/ Plano /Lucas 75002-24-23-23-26-74-75-86-92-93-94
Kelly Kirkpatrick 972 390-2671 Judy Norton 972 867-5209 | 22+ | SouthEast Dallas 75227 & 75210
Allison Cole 214 381-0515 |
| 2 | Arlington/Grand Prairie 76003-04-05-06-10-11-14-16-17-19-94-96
Dede Huchteman 817 640-0919 | 23 | North of Beltline, West of Tollroad see Area 3
75248 |
| 3/+ | Carrollton & Areas 6,23,25 75067-009-011-006
Penny Smith 972 774-9148 | 24 | North of Bachman 75220 See Area 27 |
| 4 | White Rock/Casa View 75228
Deb Ryburn 214 328-1982 | 25+ | Farmers Branch/Addison 75234-75001 See Area 3 |
| 5+ | ParkCities/Oak Lawn 75219-75202-75204
Trish Houck 214 559-3012 | 26 | North of LBJ 75240 See Area 3 |
| 6 | Far North Dallas see Area 3 | 27 | Northwest Dallas 75229
Nancy Whatley 214 488-2162 |
| 7 | Southlake /Justin/Keller/Grapevine/Roanok/Argyle/Alvord/
Decatur 76051-92-76247-48-62-76224 & 76226 | 28-31 | Oak Cliff One & Oak Cliff Cluster 75215-16-75233 -75224 -75232-75237-75241
Kim Wallace 214 941-9745
Laney McGriff 214 330-1139 |
| 8 | Downtown- see Area 5 75202 & 75204 | 32 | Park Cities 75205 & 75225 See Area 5 |
| 9+ | Old East Dallas 75214-75246-75226-75223-75210
Audrey Estes 214 824-3213 | 33 | Richardson 75080-81-82-83-84-85 See Area 1 |
| 10 | White Rock East/East East Dallas 75218
Christine Jarosz 214 319-6696 | 34 | Rockwall /Rowlett/South Garland |
| 11 | East of Bachman 75209 See Area 5 | 35 | White Rock/Skillman 75231 & 75238 See Area 21 |
| 12 | Southeast Texas /Mesquite/Balch Springs/Seagoville/
Kaufman/Kemp 75217-75253-75149-75162-75180-75182-75159
See Area 22 | 36 | Tollroad 75230 & 75251 See Area 27 |
| 13 | Fort Worth and Azle Sharon Huber 817-294-2447 | 37 | Warehouse District Downtown 75201 & 75207
& 75247 |
| 14 | Denton/Frisco
Julie Kortidis 800 809-1982 | 38 | Coppell/Lewisville 75056-57-67-75028—75019
Contact person - Canda Dee Beeler 972 317-3082 |
| 15 | Garland 75040-75041-75042
Judy Danielson & Cathy Brock 972 240-4243
Carol Currie 972 431-9855 | 39 | Sherman/Van Alstyne/Texoma
Contacts:
Sandy Edmondson & Kelli Pickard 903-813-1961
Sherry Heath & Brenda Hix 903-482-5188 |
| 16 | Grand Prairie 75050-51-52-53-54 see Area 2 | 40 | Cedar Creek
Carol West 817 265-0875 |
| 17 | HEB /Colleyville/N Richland Hills 75261-76022-39-40-53-54-21-34-76095-76180 | XX | Weatherford and Points West
Contacts:
Beth Llewellyn & Janet Davee 817 596-9316 |
| 18 | Irving 75013-14-16-17-18-39-60-61-62-63-84
Sally Harvey/ Jackie Anderson 972 594-8852 | | |
| 19 | Southern Dallas County
75104-15-16-23-34-37-38-43-46-47-52-54-72 | | |
| 20 | Lovefield 75235 See Area 5 | | |
| 21 | White Rock/M Streets 75206
Peggy C 214 319-6696 | | |



WCA Line - (214) 319-6696



Festival-FYI

Over 70 volunteers and sponsors worked together to make this event outstanding!!

Kimberly Truax, who came up with the U-Haul Competition, picked up the u-haul and loaded stuff from her storage all by herself...she had little sympathy for those competitors who did not want to move the washer off the truck in the competition. Great idea, Kimberly.

The Post Event Committee really made quick work of cleaning up the field. Necia Robinson, who also came in at the last minute to organize the softball tournament, was instrumental in making clean up a snap. A big thanks to you.

Joy Barnett helped with T-shirt and poster designs as well as organizing the golf skills competition. As an EMT, she was available to administer first aid. We are glad for your participation.

Thanks to Lin Holmes-Ford who organized the Vendors. This is such an important part of the Festival. It's an opportunity to share information, skills, and ideas with one another. Thanks, Lin.

Daryn DeZengotita designed Registration.

Deb Ryburn was the best Sports Coordinator ever. She helped with prizes. And she handled the competition like a dream.

Heather Raich, Co-coordinator, organized the entertainment, found sponsors, arranged for donated goods, handled advertising. She was great. She has big plans for next year.

Cheryl Rodgers became involved late in the game and got the word out to everyone. Thanks for your enthusiasm.

Sue Ellen's donated all soft drinks and ice.

WCA donated tickets to volunteers who worked the Women's Health Initiative Breast Screening Event on October 11. Tickets were offered to those coming in for the screening also.

Next year's Festival is scheduled for the **3rd week in October** to avoid conflicting



with the Banderas Women's Festival, the Texas Open Tour, and a big bowling event.

The Concession stand was set up by Kimberly Truax and run, for the most part, by women from Area 15. Let's hear it for the Garland women who made eating so enjoyable and want to do the "kitchen" next year. I say, "Yes".

You can always depend on Deb Floyd when it comes to organizing. Thanks for the mailing lists, the post cards, setting up the bank, and handling everything so well.

Kathryn Bryant and East Dallas hosted post event party.

Thanks, Kathy G, for supplying volleyball staff and all those copies.

Suzanne and Mary for making those meetings and publicizing at the Women's Southwest Federal Credit Union.

Shirley Decker did the trophies and T-shirts.

Some of our hard working Coordinators and Volunteers

"Build It and They Will Come"

Each year, our own little "field of dreams" seems to magically appear. It all appears nice and easy but it takes a great deal of work to make this magic happen. This magic is performed by Mary Jo Madden and her crew: Audrey Estes, Lisa Mashigian, Emily Ewing, Linda Lawrence, and Lisa Eades. What a great job you do.

In order to protect the musicians and their instruments should it rain, we expanded our tent space and actually rented real tents. All the little colored tents made the field look very festive. Our tents were sponsored this year by Nancy Moreland and Hillside Financial Mortgage Loan Company.

Making the field look good is important and so is creating easy access to the events. This was handled by Maria Candiloros who made the signs for all the events.

Knowing that presentation is almost everything, I want to thank you all for making the field so special.



MARY L. MACGREGOR, PH.D.

INDIVIDUAL, COUPLE and FAMILY COUNSELING

3609 Cedar Springs
Dallas, Texas 75219
(214) 521-4810

Honoring Each Other, Creating our Story, and Making a Name for Ourselves

In planning this event, we tried to think of events and activities that would really stimulate interest in being there and supporting the event...

It has always been important to remember and honor those who have done so much for us. This year at the Festival, we honored Barbara O'Brien by creating and presenting the first annual O'Brien Award for Outstanding Achievement in Women's Competition.

We also provided other ways for women to honor those they loved...

I, in fact, sponsored the **Peggy Smith Puzzle Off Tournament** and named it for my Mother, Peggy Smith Jarosz because she loves puzzles so much and I wanted to show her how much I love her.

Glo Coalson and Janet Smith sponsored the **Marilyn Lipp Stage**, the entertainment sound stage in memory of their friend.

Trish Houck sponsored **Reilly Houck's Fun for Kids** honoring her daughter.

And we asked other sponsors to sponsor something that was special for them....

Nancy Moreland, Hillside Financial Mortgage Loan, underwrote the **Vendor's Big Top**.

Sibby Barrett, Dallas Affaires Cake Company, sponsored the **Bake Off Baking Contest**.

Julie Kortidis/ Avalon Herbaly and Reiki Circle of Healing sponsored the **drumming**

Outreach and The Puzzle Off

Four months prior to the Festival, WCA worked a table in front of Crossroads Market on Cedar Springs. Information about WCA as well as brochures for the Women's October Festival were distributed. We handed out old newsletters, obtained new names for the mailing list, sold Festival T-shirts when they became available, and signed up women as volunteers. The table was staffed primarily by the Programs Director and Lin Holmes-Ford but many others came by to help. While we were there the first two months both Saturday and Sunday, we are now only going to work on Saturday afternoon. This was so successful that we will continue to do this on a regular basis. If you are interested in outreach, let us know.

One Saturday while working the table in July, I noticed this one guy (45-?, a little like Santa Claus, a really sweet looking man) pass our little spot 4 times. On his fourth pass by, I said, "You must be looking for something really special". He smiled ruefully and replied, "I'm not sure that when I find him, it will be worth it." I laughed and suggested that he sit down and let his friend come to him. (This experience taught me to always have an extra chair available for just such an occasion.) So, he joined me in the shade of the one tree. We began talking, sharing relationship experiences, and agreed that older, more mature people (us) are so much more reasonable, responsible, and wonderful than younger, less mature people (them) are. We discussed these things and **had a good laugh at ourselves**. He asked us what we were doing. I told him

about the Festival and finally asked him what he did. He told me that he made jigsaw puzzles. Now, remember I underwrite the Jigsaw Puzzle Tournament every year, so this was of great interest to me. I quickly whipped open the brochure and showed him the information about the Peggy Smith Puzzle Tournament. I was very excited. Without a moment's hesitation, Al offered to supply all the puzzles for the tournament (a gift worth \$200). This was getting really exciting now. He suggested that the appropriate puzzle for our tournament would be the Norman Rockwell rendition of "Rosie the Riveter." Eagerly, I agreed with him. We exchanged necessary information and then he left looking for his friend.

Our puzzles were a gift from Al Fink of Fink and Company, Hope, Arkansas (He supplied the Clinton/Gore Inauguration with 3500 puzzles of American Gothic, substituting Bill and Hillary's faces for the traditional ones). He sent the puzzles immediately with a few extra to raffle off. He was so nice and even sent the catalogue I requested. If you ever want a puzzle, I suggest you look for ones manufactured by Fink and Company. The puzzles are amazing. From incandescent puzzles to wall sized maps of both the ancient and modern worlds, from puzzles of the paintings of Maxfield Parrish to the Mona Lisa, from great landscapes to humorous poetry; his puzzles are not only good, they are great. They are like works of art.

That's how we got our puzzles. The puzzles were a real hit. I had many people offer to buy them at the Festival. The whole thing seemed like a bit of magic. How many people make jigsaw puzzles? How many people want them for an event? Magic for sure!.

This story is just a great example to me of how willing people are to help others and to share. Giving of what you have is so simple; it doesn't take a sacrifice; and, it can make such a difference in the lives of all of us. This is what WCA means to me. We all have certain gifts, skills, talents: and, if we are willing to share a little, we can do a lot together.





Avalon Herbal

**A Catalog of Earthly Delights
by Avalon Herbal & Friends**

**Handmade Soap, Bath Salts,
Oils & Powders
created by Reiki Practitioners**

**Gift Baskets for Women & Men
Herbal Extracts and Ointments
Flower Essences & Magical Items
Tarot, Incense & Hemp Products
Herbal Teas,
Soapmaking Kits with Video**

**www.avalonherbal.com
1-800-809-1982**

**If you know someone who needs eyeglasses but cannot afford them,
maybe we can help. Call Kellye Kirkpatrick at (972) 390-2671 for
more information.**



Eco Update

It seems there are a lot of feathered-friend lovers among us, as demonstrated by the terrific response we've had from the Owl Recovery Project, featured in our last newsletter. For all of you who've been collecting lint, cardboard toilet-paper rolls, etc., for these homeless owls, you'll be happy to know that a collection point will now be provided at all future events, including area meetings (which is just one more good reason to make certain you don't miss any!). Many thanks to Christa Morrow for providing our first collection box at the October Women's Festival.

SE HABLA ESPAÑOL

Peggy L. Gross, P.C.
ATTORNEY AT LAW

2145 N. JOSEY LANE, SUITE 210
CARROLLTON, TEXAS 75006
(972) 245-5388 FAX (972) 242-2693

Womenspeak

A forum for members to share their insights, voice their opinions, review a great book or movie, uncover the mysteries of the universe (in 200 words or less), or otherwise share their poetic inspirations with the community. Send submissions to: WCA, Box 180777, Dallas, TX 75218. ATTN: Mary Jo Madden.

"Bed and Bedlam"

I've known the sweetness
of you in the night,
the slow rhythm of you
in light so fine and pale,
the path of your hands
traveling the curves of me,
the bumps and dips
and tunnels of me.
I've seen the pleasure
in your deep eyes,
the pleading and the power,
the possession.

And yet you whip me
with your words, wound me
while I wonder who
it is you seek to kill,
what devils you must
exorcise.

I am your sister and your mother,
I am your self -
your worst and best.
My lips are pillows
for your weariness
yet you hesitate to rest.

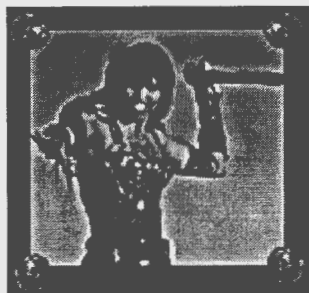
It's true I should be
more afraid of your wrath,
your secret vein of madness.
Your fear of death
exceeds your need of me
and I cannot contend
with your lust for
self-destruction.

You see through me,
all my fears and phobias
you have neatly organized
and numbered.
You think you hold
the key to me, but
there are many keys,
and even if you held them all,
the locks are hidden well.
(But I could help you find them
if I had your kindness
in the morning.)

Into your confusion
I have run, my need
for your hands stronger
than my fear of pain
or need for preservation.
I will start speaking
French to you in bed
so you cannot decipher
my love
and bruise me with it
anymore.

by Shawn McDonough

2000 by 2000



WCA is a grass-roots organization which means, from experience, that growth takes place largely by word-of-mouth, one on one encounters, friends inviting friends to a meeting or special event and suddenly finding themselves becoming involved and committed. That is the beauty of a grass-roots movement. It is also very slow going.

This does not mean, however, that we cannot have goals. Goals are good. They bring change and growth and help us measure our progress. The WCA has set itself a goal — 2000 members by the year 2000. It's ambitious, we admit, but a nice, symmetrical number (and easy to remember, don't you think?).

How will we get there? First of all, there are currently 426 WCA members. Our mailing list, however, contains hundreds of names of women who have at some time expressed interest in WCA but never joined or attended meet-

ings. To give ourselves a fresh start (and save money on mailing costs), we're deleting all names who have been on the list over 2 years and have not attended meetings or joined the organization.

Next, we will be setting up information tables on Cedar Springs for several hours every other Saturday to hand out our newsletter, flyers for upcoming events, etc., so women who may have never heard of

WCA can learn about us. A new brochure, which will also be distributed, is now in the works to explain WCA's mission and what we're all about. If you are interested in manning a table for a few hours during the upcoming months, please call Christine at 214-319-6696.

Last of all, and most importantly, we are counting on ourselves to reach our membership goal of 2000 by 2000. If each of us brings in just one new member in 1998 and each new member brings in another new member in 1999, by Jan 1, 2000, this effort alone will result in a WCA 1704 women strong. Imagine what we can achieve then!

POSITIONS AVAILABLE:

A non-nursing Assisted Living Community located in Plano has the following positions open:

Activities Director

Must have experience in developing and implementing activities for senior adults and recruiting volunteers. Enthusiasm a must.

Personal Care Attendant

No certification required

Medication Attendant

No certification required

Food Service Assistant

Licensed Vocational Nurse

All positions are hourly with excellent benefits.

If you are interested, please call Kimberly at (972) 519-0480.

I want to become a member of the Women's Communities Association and make a tax-deductible donation in the following amount:

\$25 \$45(family) \$120 \$150 \$250 \$500 \$1,000 \$ _____

Name _____

Mailing Address _____

Home Phone _____ Business Phone _____

Fax Number _____ e-mail address _____

My tax-deductible gift will be made by:

Enclosed check payable to Women's Communities Association

Charge Mastercard Visa Card # _____

Exp. Date _____ \$ _____ for _____ months

Monthly Bank Draft: Bank _____ Acct No. _____

Acct. Name _____ \$ _____ for _____ months

Signature _____ (Please attach voided check if using bank draft)

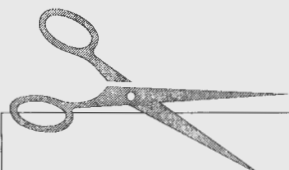
My employer may have matching gifts

I would like to receive information on how to include WCA in my will insurance
 trust other

I am making an additional gift of \$ _____ in honor/memory of: (Name/Address)

Please send WCA information to the enclosed list of names and addresses.

Please contact me regarding volunteer opportunities



Community Calendar

Candy Marcum Institute for Women Speakers Series every 4th Wednesday, 6:30 p.m., OLCS (214-520-8108)	
Dallas Women's Coalition Every last Monday, 7:00 p.m., YWCA on Ross Ave.	
LLDD Every 4th Sunday, MCC (214-320-6074)	
Lesbian Book Club Pot Luck Every first Friday. Call Maria at 214 526-6405 for directions	
Stonewall Professional and Business Association every 3rd Friday, 11:25 a.m., (214-521-5342)	
Women's Business Network every 2nd Thursday, 6:30 p.m., (214-712-8976)	
Dec. 13	Holiday Party and Sharing with Our Elders
Dec. 21	<i>Neighborhood News and Quarterly Report</i> deadline for articles
February 7	Mardi Gras in Lee Park

Are you interested in a Passbook? Call us and we may arrange to distribute them if enough women want to buy one. WCA can receive \$6 for every Passbook sold. Not much of a return but if only 200 wanted Passbooks, it would be a very good return of our energy.

What's Going On ??

Let WCA know your e-mail address, so we can notify you of coming events. Zap a note to dfloyd@earthlink.net

Anyone who would like to learn or play "42" dominoes please call June McCorkle at 972-554-8707

FREE
4 10' sections of black plastic drainage pipe. Come get it!!
Call Kellye - 972-390-2671

Announcements for events will be sent to Members prior to each event. All others please call for information.

Regularly Scheduled Area Meetings

Area 1	Allen/Plano	3rd Friday
Areas 4/10/35	Casa View, East East Dallas, Skillman	2nd Wednesday
Area 13	Fort Worth	1st Wednesday
Area 5/8/11/20/32	Cedar Springs, Park Cities	1st Wednesday
Area 9	East Dallas	3rd Sunday
Area 19	Lancaster	3rd Sunday
Area 15	Garland/Rockwall/Rowlett	4th Sunday
Area 29/30	Oak Cliff II	Last Sunday

Check with your coordinator for times and places in your neighborhood

IB-BOARD

FREE
Oak Entertainment Center
5' X 6' X 16"
Call Kellye - 972-390-2671

Don't forget about the Tom Thumb Reward Card. WCA's number is 2915. 1% of all your purchases will go to your designated non profit. An easy way to support your neighborhood. If you have any questions about this, call the office at 214 319-6696 or 817 294-2447.

HAPPY THANKSGIVING



omen's Communities Association
Box 180777
Dallas Texas 75218
214 319-6696

BULK RATE
U.S. POSTAGE
DALLAS, TX
PERMIT NO.
0803

TO:

|||||
Herland Voice
2312 NW 39 St
Oklahoma City OK 73112-8701